



How will I know when I have a reward? Will I be notified?

We will send updates by text message and/or email when your rewards are available.

If you can't receive text messages or emails, please check your account 90 days after you finish your healthy activity. If you chose not to receive text messages or emails, you can opt back in on the Notifications page on the Benefit Reward Hub.

How can I use my Healthy Rewards?

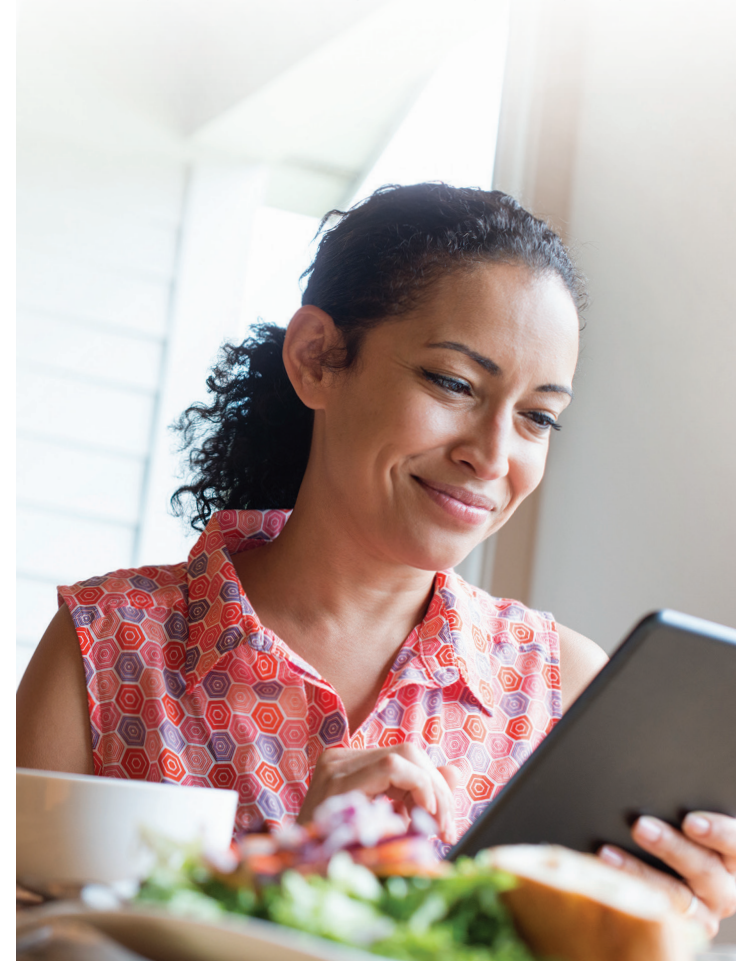
Visit Benefit Reward Hub to choose a gift card from a variety of popular stores like Amazon, TJ Maxx Brands, and Domino's.

You cannot use your rewards or gift card dollars to buy alcohol, tobacco products, or firearms.

If you are no longer a Healthy Blue member and you still have a rewards balance, you may redeem your funds for 90 days after you disenroll. Just call Healthy Rewards toll free.



Stay healthy. Earn rewards.



Healthy Rewards Customer Service Line toll free at **888-990-8681 (TTY 711)**
Monday through Friday from 8 a.m. to 7 p.m. Central time.

Healthy Blue is a Medicaid product offered by Missouri Care, Inc., a MO HealthNet Managed Care health plan contracting with the Missouri Department of Social Services. Healthy Blue is administered statewide by Missouri Care, Inc. and in the Kansas City service region by Missouri Care, Inc. in cooperation with Blue Cross and Blue Shield of Kansas City. Missouri Care, Inc. and Blue Cross and Blue Shield of Kansas City are both independent licensees of the Blue Cross and Blue Shield Association.



healthybluemo.com

1032329MOMENHBL 07/23

MOC24086 10/26/2023

Staying healthy earns you rewards with our Healthy Rewards program.

Healthy Blue rewards its members for making healthy choices.

Healthy Rewards is a no-cost, optional program for eligible MO HealthNet Managed Care health plan, Healthy Blue members. It encourages you to complete healthy activities and screenings to help you get and stay healthy.

How do I start earning Healthy Rewards?

- 1 Register** for Healthy Rewards by logging in to the Benefit Reward Hub at **healthybluemo.com**.



Or call Healthy Rewards toll free at **888-990-8681 (TTY 711)** Monday through Friday from 8 a.m. to 7 p.m. Central time.

- 2 Complete** eligible appointments and screenings.

- 3 Choose** your gift card. Enjoy!

See what you can earn on your Healthy Rewards account homepage, and after you finish an activity, we will load the rewards to your account.

Choose your gift card from stores like Amazon, TJ Maxx Brands, and Domino's.

Healthy Rewards program members can earn rewards for:

Who can earn	Activity	Reward	Limitations
F, ages 13–55	1st prenatal care visit	\$30	1 per pregnancy
F, ages 13–55	Postpartum care visit	\$30	1 per pregnancy
M, F, ages 0–15 months	Well-child visits in the first 30 months of life	\$15, max \$90	6 times from 0-15 months
M, F, ages 15 months + 1 day to 30 months	Well-child visits in the first 30 months of life	\$15, max \$30	2 times from 15 months + 1 day to 30 months
M, F, all ages	Flu shot	\$10	1 per 12 months
M, F, ages 2–20	Annual dental visit	\$25	1 per 12 months
M, F, ages 3–21	Well child visits	\$25	1 per 12 months
M, F, ages 22 and older	Adult Well Visit	\$10	1 per 12 months
M, F, ages 5 and older	Asthma Medication Management	\$5	1 per quarter
F, ages 50–74	Breast cancer screening	\$30	1 per 24 months
F, ages 18–64	Cervical cancer screening	\$30	1 per 36 months
M, F, ages 18–75	Diabetic retinal eye exam	\$25	1 per 12 months
F, ages 16–24	Chlamydia testing	\$25	1 per 12 months
M, F, ages 6 and older	30-Day follow-up after behavioral health hospitalization	\$25, max \$75	3 per 12 months
M, F, ages 0–2nd birthday	Lead screening in children	\$25	1 per member, on or before their 2nd birthday

M, F, ages 18–75	Diabetic A1c screening	\$25	1 per 12 months
M, F, ages 3–21	Healthy Weight Management Quiz	\$5	1 per 12 months
M, F, ages 18–75	Tobacco cessation quiz	\$5	1 per 12 months
M, F, ages 18–75	Substance abuse quiz	\$5	1 per 12 months
M, F, ages 5 and older	COVID vaccine	\$10	1 per member; Full series required: 1 dose Johnson & Johnson or 2 doses Moderna/Pfizer
M, F, All Ages	Health Risk Assessment within 30 days of health plan enrollment	\$10	1 per member

*To earn rewards, you must be enrolled in Healthy Rewards before or within 30 days of finishing a healthy activity.

*Limitations and restrictions apply. Benefits may change.

I finished a healthy activity. How do I get my reward?

First, we have to get a claim from your doctor. That can take up to 90 days. Once your claim is received, we will add the reward to your balance if you have joined the Healthy Rewards program and if you have finished the activity requirements.

You have to report some healthy activities yourself. Those activities will have a Report button next to them on your Healthy Rewards account homepage on the Benefit Reward Hub. Select the **Report** button to self-report. You can also call Healthy Rewards toll free to report finished activities.